

INVENTORY CONTROL SYSTEM

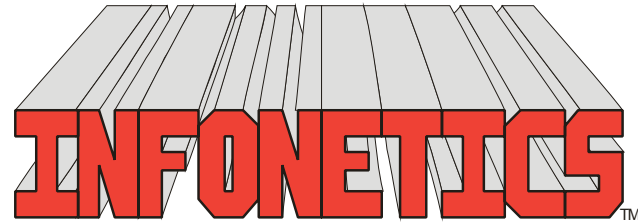


INVENTORY
CONTROL
SYSTEM

The *INVENTORY CONTROL SYSTEM* is a database used to describe in detail the products sold by a company. A transaction history file is maintained automatically so that detailed review of the receipts and shipment of products is available throughout the system.

Minimum Stock Point, Order Point, and Maximum Stock Point can be automatically computed based on various sales usage averaging formulas, thereby reducing investment in Inventory Stock while reducing out of stock and dead stock conditions. Various reports ranging from a master listing, to different price lists, stock labels, valuation reports and reorder/overage reports are available.

Price files, supplied by your vendors/manufacturers, can be used to automatically upload price/cost changes into the Inventory database.



1729 Gateway Circle, OH 43123 • Grove City, OH 43123 • Phone 614-875-2006
www.infonetx.com • e-mail: info@infonetx.com • Fax 614-875-7761

INVENTORY CONTROL MENU

INVENTORY CONTROL

- The **EDIT INVENTORY PART FILE** program is used to add, change, view or delete part records in the Inventory database. This program is also used to review quantities in each warehouse and to interactively review and/or adjust the stocking control factors (averaging formula, minimum days/quantity, buy point days/quantity, and maximum days/quantity to stock) interactively on a part-by-part basis.
- The **EDIT INVENTORY PRICES** program is used to establish branch warehouse pricing overrides.
- The **POST INVENTORY RECEIPTS** program is used to post inbound inventory manually if no purchase control system is being used.
- The **POST INVENTORY TRANSFERS** program is used to transfer inventory between warehouses if no purchase control system is being used.



INVENTORY CONTROL MENU (first page)

REPORTS

- The **INVENTORY MASTER LISTING** program lists all data associated with a part including pricing, product type, G/L codes, current quantities, detailed transaction history, stock control averaging formulas with minimum, buy point and maximum.
- The **CONDENSED LIST** displays the data in a more compact format.
- The **PRICE LISTING** shows only the List Price, Quantity Discounts, and Current Stocking Quantities.

LABELS

- The **LABEL PRINTING** programs print stock labels in three sizes including specialized barcode labels.

VALUATIONS

- The **VALUATION REPORTS** compute the list price, average and latest cost value of the parts on hand at a given time.

STOCKING REPORTS

- The **STOCKING REPORTS** list the current Quantity On Hand, Available, and On Order, along with the Minimum, Buy Point, and Maximum stocking level and suggested Reorder Quantity.
- The **REORDER REPORT** lists only those items which have fallen below their order point while the **OVERAGE REPORT** lists only those items over their established Maximum.
- The **INVENTORY STOCKING LIST** shows all items, **regardless of reorder status**, as long as there is some kind of quantity and/or history associated with the part number.
- The **INVENTORY SHIPPABLE LIST** shows only items that have some "Shippable" activity.
- The **INVENTORY UNSHIPABLE LIST** shows only items that have some "UnShippable" activity upcoming.



- The **INVENTORY HISTORY LIST** shows only items that have had **some activity** in the history file within the prescribed transaction date range.
- The **INVENTORY INACTIVITY LIST** shows only items that have had **no activity** in the history file within the prescribed transaction date range and **have a current quantity** on hand or available.
- The **INVENTORY UNUSED LIST** shows only items which have had no activity in the history file **for any warehouse** within the prescribed date range and **have no quantities**.

PHYSICAL COUNTING

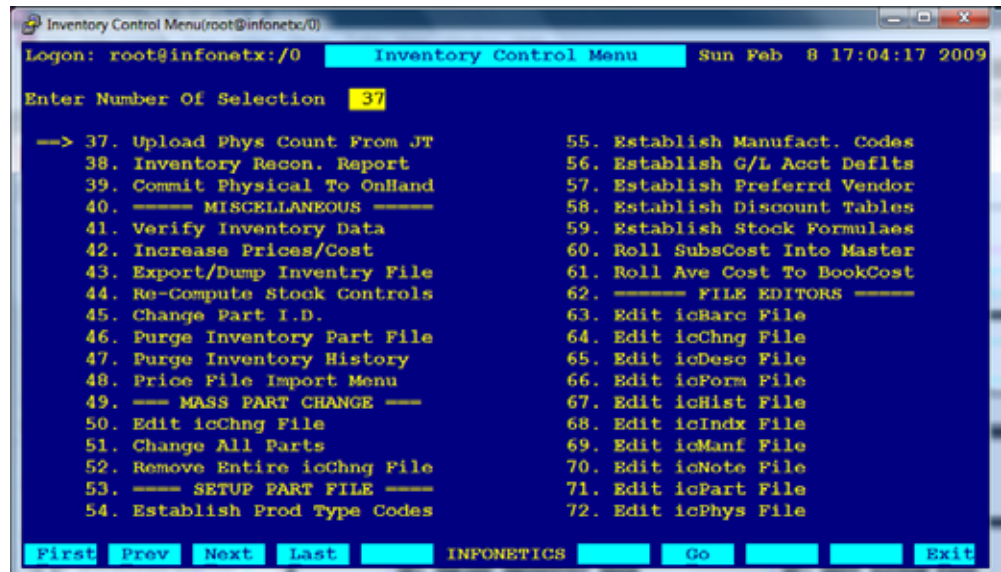
- The **PHYSICAL COUNTING** programs are a series of programs used to assist the process of taking an offline physical inventory and reconciling the results with the database figures.

MISCELLANEOUS

- The **VERIFY INVENTORY DATA** program is a maintenance program to ensure internal data integrity in the Inventory database.
- The **INCREASE PRICES/COST** program is used to make changes (increase or decrease) in either selling price or latest cost by either a flat fixed amount, or a percentage.
- The **RECOMPUTE STOCKING CONTROLS** program automatically re-computes the minimum, buy point, and maximum based on pre-established averaging formulas for a selected range of parts.
- The **CHANGE PART ID** program is a maintenance program used to change a Part ID throughout the entire system.
- The **PURGE INVENTORY PART FILE** program is a maintenance program used to remove parts from the Inventory database.
- The **PURGE INVENTORY HISTORY** program deletes old Inventory History records from the system. Usually, six month's worth of history is adequate to provide automatic stock controls (minimum, buy point, maximum) computation.
- The **PRICE FILE UPLOAD MENU** provides access to a third level menu of Price File Upload Menu programs.

SETUP PART FILE

- The **ESTABLISH PRODUCT TYPE CODES** program is used to assign a new Product Type code to selected part records. It also assigns the G/L Accounts based on the defaults established in the icType file editor as per the new Product Type code assigned.
- The **ESTABLISH MANUFACTURER CODES** program is used to assign a new Manufacturer code to selected part records.



INVENTORY CONTROL MENU (second page)

- The **ESTABLISH G/L ACCOUNT DEFAULTS** program is used to assign the G/L Accounts for selected part records based on the defaults established in the icType file editors.
- The **ESTABLISH PREFERRED VENDOR** program is used to assign a new Preferred Vendor code to selected part records.
- The **ESTABLISH DISCOUNT TABLES** program is used to clone an existing Quantity Discount Pricing Table from an established Part onto other selected parts.
- The **ESTABLISH STOCK FORMULAS** program is used to assign a Stock Formula to selected warehouse quantity records.
- The **ROLL SUBCOST INTO MASTER** program is used to recalculate the current Average, Latest, and Book Cost for a master part record based on the costs of its Sub-Assembly Table. This program is used to periodically correct cost figures on master/kit parts based on more recent costing information in the subassembly parts.
- The **ROLL AVERAGE COST TO BOOKCOST** program is used on a yearly basis, after the year end Inventory Valuation has been computed and finalized, to roll the current Average Cost into the Book Cost field. This is a common method for setting aside a Last In First Out (LIFO) cost figure in preparation for the next year end valuation.

FILE EDITORS

- **FILE EDITORS** provide low level access to the database for programmer/system administrator use only.



The EDIT INVENTORY PART FILE program is used to add, change, view or delete part records in the Inventory database.

- Each part is identified by a upto **15 character Part ID** and can also be located by its description.
- Additional description lines** are available, along with **non-printing note lines** for cross-reference or product sourcing information.
- The **Product Type** code groups similar items into logical groups for **pricing/discounting considerations**.
- Manufacturer** is a three character code designating the manufacturer and/or vendor which **groups groups parts together for use in customer pricing schemes** and is also useful for **sorting reports/listings by manufacturer**.
- General Ledger Asset, Sales and Cost of Sales** account numbers are used to produce daily and monthly invoice journals, and to update the General Ledger.
- The **Volume** is used for **converting quantity sold to common factor** (for example, cubic feet of gas per cylinder, pounds to tons).
- The **Multiplier** is a **pricing conversion factor** used to convert between stocking units and pricing units, (for example, sold by the pound, but priced per ton).
- The file includes **List Price**, along with **average, latest cost and book cost** figures.
- The **MSDS ID** indicates which **Material Safety Data Sheet** is required for this part. As Orders/Invoices are created, a customer's MSDS file is automatically **monitored and updated** as new MSDS sheets are triggered for distribution.
- The **Vendor Part ID** is a **secondary index** used to locate a part via the code encrypted in its barcode label.
- Seven (7) Y/N flags** are used to determine **tax status, whole units versus decimals, on-line editing options and pricing combination status**.
- Stocking information for an unlimited number of stores and warehouses** is maintained, including the **bin Location, quantities On Hand, Available for sale, Back Ordered (hardgoods)/ Empty (cylinders), On Order from vendor, Minimum, Buy Point and Maximum stocking levels**.

Part	Wh	Description	List Price	Unit	Last Cost
LIN5P-316	545	3/16 LINCOLN 6010+	2.2410	LBS	1.6234
LIN5P-332	250	3/32 LINCOLN 6010+	1.7530	LBS	0.7580
LIN5P-532	650	5/32 LINCOLN 6010+	1.5920	LBS	0.6050
LIN5P-14	750	1/4 LINCOLN 6010	1.5620	LBS	0.5770
LIN5P-18	550	FLEETWELD 5P 1/8	1.5740	LBS	0.5150
LIN5P-18-1	0	DO NOT USE	2.39	PKG	1.11
LIN5P-316	750	3/16 LINCOLN 6010	1.5440	LBS	0.5600
LIN5P-332	250	3/32 LINCOLN 6010	1.7160	LBS	0.7230

EDIT SCREEN: INVENTORY PART FILE MASTER SCREEN (top)

VIEW SCREEN: INVENTORY PART FILE (bottom)

- Quantity discount pricing** is available stated as either a **percentage or flat amount off list price** or a **fixed amount**.
- Sub-Assemblies** table providing for kit or outfit packages to be invoiced through one part number.
- Parts may be located quickly on a view screen, **sorted either by the Part ID or any part of the description**.



The **WAREHOUSE QUANTITY SCREEN** (located behind the **MASTER PART SCREEN**) is used to interactively review and/or adjust the stocking control factors.

- Built-in controls exist for:
 - averaging formula
 - minimum days/quantity to stock
 - buy point days/quantity to stock
 - maximum days/quantity to stock
- Monthly sales usage subtotals are displayed with quarterly subtotals and a Year-To-Date grand total.
- Spikes in the usage subtotals (usage this month greater than previous 5 months combined) are flagged and can be overridden to correct averaging.
- Transaction history can be viewed on-line to review who's buying the product.
- Formulas can be established to govern a variety of stocking situations. From hot moving items, to expensive slow movers, non-stock and seasonal.
- Minimum, Buy Point and Maximum can be frozen at current level by zeroing out the days control points.
- Manual formula can be entered, superseding standard formulas in formula file.

Logon: root@infonetx:/26 Edit Inventory Part File Mon Oct 19 15:43:27 2009

WARNING: Overstock. Usage Spike.

Part I.D.	TWEL1-23		Description	CONTACT TIP 11-23	
Whse/Loca	1	YOUNGSTOWN	LocA	A17	
On Hand	376		LocB	S10	
Committed	354	Avail	22		
B.O./Empty	0		Note	ALSO CHECK PROFAX	
On Order	674	Extnd	696		
Std. Pack	10				
List Price	0.600	10/08*	144	11/08	0 12/08 0 = 144
Ave Cost	0.350	1/09	0	2/09	0 3/09 25 = 25
Last Cost	0.350	4/09	0	5/09	0 6/09 0 = 0
Book Cost	0.310	7/09	25	8/09	30 9/09 10 = 65
Formula(~ Manual)	Months	6	Offset	0	This Months Usage = 0
Daily Average		1.1944	Monthly	36	Total Usage = 234
Minimum Days	15		Lead Time + Safety Margin		
Minimum Stock Point		17	Daily Average X Minimum Days		
Buy Point Days	30		Lead Time + Safety + Reorder Freq		
Buy Point		35	Daily Average X Buy Point Days		
Maximum Days	90		Lead Time + Safety + Freq + Order Quantity		
Maximum Stock Point	*	107	Daily Average x Maximum Days		

First Prev Next Last Comput INPNETICS Clear Update View Delete Exit

EDIT SCREEN: EDIT INVENTORY PART FILE/WAREHOUSE QUANTITY SCREEN

Logon: root@infonetx:/26 Edit Inventory Part File Mon Oct 19 17:02:58 2009

WARNING: Overstock. Usage Spike.

OXY282	OXYGEN, COMPRESSED		2.2 UN1072 X	
Wh	--Date--	-Received -Shipped	-----Cost/Price	Trans ID- Description/Reason--
1	02/21/07	4	13.26 O	19775 NEW MIDDLETOWN FINAN
1	04/12/07	5	13.26 O	19779 NEW MIDDLETOWN FINAN
1	05/22/07	5	13.26 O	19784 DAIRY QUEEN
1	05/22/07	5	13.26 O	198021 WHEELING REGULATOR A
1	05/22/07	5	13.26 O	1234567 WHEATON PARTY RENTAL
1	05/22/07	5	13.26 O	12345678 NEW MIDDLETOWN FINAN
1	06/18/07	-5	3.18 I	0 DOCK COUNT MOVEMENT
1	01/04/08	1	13.26 O	198036 JOE'S BODY SHOP
1	01/21/08	5	13.26 O	198039 LIQUIDTECH INC
1	01/21/08	5	13.26 O	1980391 LIGHTNER WELDING SUP
1	03/03/08	4	13.26 O	19588 LOCKHEED MARTIN ENER
1	06/04/08	4	13.26 O	198047 NEW MIDDLETOWN FINAN
1	10/22/08	4	13.26 O	198065 DAIRY QUEEN #285
1	01/03/09	2	7.95 O	198072 WAGNER TOOL RENTAL
1	01/03/09	2	7.95 O	198093 JOE'S BODY SHOP
1	(03/05/09)	2	13.26 O	1980392 EVASION TAX COMPANY
1	(03/22/09)	4	13.26 O	19608 NEW MIDDLETOWN FINAN

First Prev Next Last INPNETICS Exit

VIEW SCREEN: INVENTORY HISTORY FILE

EDIT INVENTORY PRICES



INVENTORY
CONTROL
SYSTEM

Edit Inventory Prices(root@infonetx:/26)

Logon: root@infonetx:/26 Edit Inventory Prices Mon Oct 19 15:32:26 2009

Part-----Wh	Description-----	---List Unit	LastCost
-----Available	-----Price	---	Location
LIN761	LINCOLN FLUX #761	0.5450 LBS	0.3850
LIN780	LINCOLN FLUX	0.5340 LBS	0.3740
LIN8018C-316	3/16 LINCOLN 8018-C3	1.6610 LBS	0.6710
LIN8018C-532	5/32 LINCOLN 8018-C3	1.6400 LBS	0.6510
LIN85-18	1/8 LINCOLN 7010-A1	1.6360 LBS	0.6470
LIN85-316	3/16 LINCOLN 7010-A1	1.5990 LBS	0.6120
LIN85-332	3/32 LINCOLN 7010-A1	1.7820 LBS	0.7060
LIN85-532	5/32 LINCOLN 7010-A1	1.6070 LBS	0.6190

First Prev Next Last INPNETICS Exit

The EDIT INVENTORY PRICES program is used to establish branch warehouse pricing overrides.

- Screen layout allows **quick editing of Quantity Breakpoints, Price and Cost.**
- **Branch Prices** can be established as a **percentage** or **flat amount** off of **list price** or a **firm, fixed amount.**
- Displays **Effective Price** (changed price) with **Latest Cost** for monitoring margin.

EDITING SCREEN: EDIT INVENTORY PRICES

POST RECEIPTS/TRANSFERS

Post Inventory Transfers(root@infonetx:/0)

Logon: root@infonetx:/0 Post Inventory Transfers Sun Feb 8 18:17:16 2009

Part I.D.	LIN35-316	3/16 LINCOLN 6011
From Warehouse	1 250	YOUNGSTOWN
To Warehouse	2 0	PITTSBURGH
Transferred Quantity	100	
B.O/Empty Quantity	0	
Transaction Date	20809	
Reason/Description	P.O. 6140	

First Prev Next Last INPNETICS Clear Update View Exit

The POST INVENTORY RECEIPTS program is used to **post inbound inventory manually** (bypassing PURCHASE CONTROL SYSTEM).

The POST INVENTORY TRANSFERS is a related program used to **transfer inventory between warehouses** (stores).

- Audit journal produced automatically at end of posting session listing posted entries, dollar value adjusted, and totals.
- Output can be directed to the screen, .PDF preview, any printer, fax, email or a networked harddrive on the server.

/usr/bin/printroot@infonetx:/0

{0:53m[0:33m[+9hLogon: root@infonetx:/0

5 2009

INPNETICS, Inc.

Sun Feb 8 18:21:11

Page: 1

Post Inventory Receipts

Part I.D.	Wh	Description	Bin Location	Trans--	Quantity	NewTotal	Price	Total	Cost	Total	BO/Empty	Reason/Description
			A--B--	Date--	Received	Quantity	Unit	Unit	Unit	Unit	Quantity	
LIN37-316	1	3/16 LINCOLN 6013		02/08/09	100	100	2.3000	230.00	0.5650	56.50	0	RECV'D P.O. 000195
LIN37-332	1	3/32 LINCOLN 6013		02/08/09	125	125	1.6970	212.13	0.7050	88.13	0	RECV'D P.O. 000195
					TOTAL *	225.00		442.13		144.63	0.00	

Page: 1

Post Inventory Receipts

Sun Feb 8 18:21:31 2009

EDIT SCREEN: POST INVENTORY RECEIPTS (top)

SAMPLE OUTPUT: POST INVENTORY RECEIPTS/TRANSFERS (bottom)



The **MASTER LISTING** lists all data associated with a part, including pricing, product type, G/L codes, current quantities, detailed transaction history, stock control and averaging formulas with minimum, buy point, and maximum.

- All reports can be sorted by **Part ID, Description, Product Type Code, G/L Accounts, Vendor** or **Quantity On Hand**.
- Can be restricted to specific **sub-sets of the parts** by restricting the product type, G/L accounts, warehouse, or other delimiters.
- Output can be directed to the screen, .PDF preview, any printer, fax, email or a networked harddrive.

SETUP SCREEN: INVENTORY MASTER LISTING

Below, and on the following page, are shown samples of output from the INVENTORY LISTINGS/REPORTS programs.

Logon: root@infonetx:/2	INFONETICS, Inc.	Tue Feb 10 19:13:42 2009	Page: 1
Cylinder Inventory List For The Period Ended 99/99/99			
Part-----	Description-----	Unit Typ Manf	
Wh ----	Location-----	-Quantity --B.O. -----	Price-----
-- A--	--B--	--On Hand -Empty ----	Unit ----Total
LIN35-18	1/8 LINCOLN 6011	LBS E04 LIN	
1	B34	2642 0	2.6600 7027.72
2	A13 B24	-100 0	2.6600 -266.00
	PART TOTAL *	2542 0	6761.72
LIN35-316	3/16 LINCOLN 6011	LBS E04 LIN	
1		250 0	1.5490 387.25
Account-----	--Quantity ----	Volume --BO/Empty -----	Price --Ave Cost -Last Cost -Book Cost
Warehouse:1 YOUNGSTOWN			
121020 INVENTORY: ELECTRODES	2892.00	0.00 0.00	7414.97 141.00 141.00 1456.75
TOTAL *	2892.00	0.00 0.00	7414.97 141.00 141.00 1456.75
Warehouse:2 PITTSBURGH			
121020 INVENTORY: ELECTRODES	-100.00	0.00 0.00	-266.00 0.00 0.00 -50.00
TOTAL *	-100.00	0.00 0.00	-266.00 0.00 0.00 -50.00
Warehouse: ***** GRAND TOTAL **			
121020 INVENTORY: ELECTRODES	2792.00	0.00 0.00	7148.97 141.00 141.00 1406.75
TOTAL *	2792.00	0.00 0.00	7148.97 141.00 141.00 1406.75
2 Parts Processed			

SAMPLE OUTPUT: INVENTORY CONDENSED LIST

INVENTORY REPORTS/LISTINGS



INVENTORY
CONTROL
SYSTEM

Logon: root@infonetx:/2

INFONETICS, Inc.
Inventory Master Listing
For The Period Ended 99/99/99

Tue Feb 10 20:16:09 2009
Page: 1

Part-----	Description/Notes-----	Codes-----	Price/Cost----	Flags/Misc-----	Sub-Assembly----	Quantity
LIN35-316	3/16 LINCOLN 6011	Type E04	ELECTRODES - MILD Weight	0.0000 Edit Desc N TaxOverrd		
	Notes -----	Manf LIN	LINCOLN	Volume	0.0000 Edit Mult N Adj Quan Y	
		Invnt 121020	INVENTORY: ELECTR	Multiply	1.0000 EditPrice Y Quan Dec O	
		Sale 410020	SALES: ELECTRODES	Price	1.5490 Edit Cost N Combine Y	
		Cost 510020	COST: ELECTRODES	Ave Cost	0.5640 Open Date 07/26/93	
		Unit LBS	SMS N CCS N	LastCost	0.5640 Close Date 00/00/00	
		Vend LINCO	LINCOLN ELECTRIC	BookCost	0.5430 Last Date Updt 10/29/07	
		VendPart		MSDS ID		

Breakpoint: List Price 1000
Quantity Price: 1.5490 0.6790

Whs: 1 YOUNGSTOWN LocationA: B:

Current Stock: --On Hand Available B.O/Empty -On Order -Extended
197 197 0 5000 5197

Trans History: --Date-- -Received -On Order -----Sold Committed --Balance Trans ID Description/Reason--
01/01/08 423 BEGINNING BALANCE
03/03/08 300 123 O 19588 NEW MIDDLETOWN FINAN
01/23/09 250 373 I 0 REC'D P.O. 6546
02/06/09 176 197 O 19261 ERIE STEEL ERECTORS
99/99/99 250 0 476 0 197 ENDING BALANCE

Monthly Usage:	3/08	4/08	5/08	6/08	7/08	8/08	9/08	10/08	11/08	12/08	1/09	2/09	Total
	300	0	0	0	0	0	0	0	0	0	0	176	476

Stock Controls: Formula----- Mths/Off -Ended -Std Pack Ave Daily --Monthly Days -Minimum Days BuyPoint Days -Maximum
STANDARD FORMULA 6 0 03/31/03 0 0.0000 0.00 15 0 30 0 90 0

Account----- --Quantity ----Volume --BO/Empty -----Price --Ave Cost -Last Cost -Book Cost

Warehouse:1 YOUNGSTOWN							
121020 INVENTORY: ELECTRODES	197.00	0.00	0.00	305.15	111.11	111.11	106.97
TOTAL *	197.00	0.00	0.00	305.15	111.11	111.11	106.97
Warehouse: ***** GRAND TOTAL **							
121020 INVENTORY: ELECTRODES	197.00	0.00	0.00	305.15	111.11	111.11	106.97
TOTAL *	197.00	0.00	0.00	305.15	111.11	111.11	106.97

1 Parts Processed

SAMPLE OUTPUT: INVENTORY MASTER LISTING



Logon: root@infonetx:/2

INFONETICS, Inc.
Inventory Price Listing
For The Period Ended 99/99/99

Tue Feb 10 20:31:39 2009
Page: 1

Part-----	Description-----	Unit Typ	Mfg Vendor	Last Cost	-----List	-----A--	-----B--	-----C--	-----D--	-----E--	-----F--
LIN35-18	1/8 LINCOLN 6011	LBS	E04 LIN LINCO	0.0000	2.6600	0.7100	0.6800				
						1000	3000				
LIN35-316	3/16 LINCOLN 6011	LBS	E04 LIN LINCO	0.5640	1.5490	0.6790					
						1000					
LIN35-316-P	3/16 LINCOLN 6011 PALLET	/PAL	E04 LIN LINCO	564.0000	749.8000	679.0000	649.0000				
						1	3				
LIN35-332	3/32 LINCOLN 6011	LBS	E04 LIN LINCO	0.6780	1.6940	0.8240	0.7940				
LIN35-532	5/32 LINCOLN 6011	LBS	E04 LIN LINCO	0.57	1.56	0.69	0.76				
	2ND LINE OF DESC										

SAMPLE OUTPUT: INVENTORY PRICE LISTING

Logon: root@infonetx:/2

INFONETICS, Inc.
Inventory Valuation
For The Period Ended 99/99/99

Tue Feb 10 20:40:22 2009
Page: 1

Part-----	Description-----	Unit Typ	Manf	Wh	Location	Quantity	--B.O.	Price	Average Cost	Latest Cost	Book Cost				
---	---	---	---	---	---	---	---	---	---	---	---	---	---	---	---
---	---	---	---	---	---	---	---	---	---	---	---	---	---	---	---
LIN35-18	1/8 LINCOLN 6011	LBS	E04 LIN												
	1			B34		2642	0	2.6600	7027.72	0.0000	0.00	100%	0.0000	0.00	81%
	2	A13		B24		-100	0	2.6600	-266.00	0.0000	0.00	100%	0.0000	0.00	81%
	PART TOTAL *					2542	0		6761.72		0.00				1271.00
LIN35-316	3/16 LINCOLN 6011	LBS	E04 LIN												
	1					197	0	1.5490	305.15	0.5640	111.11	64%	0.5640	111.11	65%
LIN35-332	3/32 LINCOLN 6011	LBS	E04 LIN												
	1					110	0	1.6940	186.34	0.6780	74.58	60%	0.6780	74.58	60%
LIN35-532	5/32 LINCOLN 6011	LBS	E04 LIN												
	2ND LINE OF DESC														
	1					175	50	1.56	272.13	0.57	99.75	63%	0.57	99.75	65%

Account----- --Quantity ---Volume --BO/Empty -----Price --Ave Cost --Last Cost --Book Cost

Warehouse:1 YOUNGSTOWN

121020 INVENTORY: ELECTRODES	3124.00	0.00	50.00	7791.34	285.44	285.44	1599.86
TOTAL *	3124.00	0.00	50.00	7791.34	285.44	285.44	1599.86

Warehouse:2 PITTSBURGH

121020 INVENTORY: ELECTRODES	-100.00	0.00	0.00	-266.00	0.00	0.00	-50.00
TOTAL *	-100.00	0.00	0.00	-266.00	0.00	0.00	-50.00

Warehouse: ***** GRAND TOTAL **

121020 INVENTORY: ELECTRODES	3024.00	0.00	50.00	7525.34	285.44	285.44	1549.86
TOTAL *	3024.00	0.00	50.00	7525.34	285.44	285.44	1549.86

5 Parts Processed

SAMPLE OUTPUT: INVENTORY VALUATION



Create Inventory Labels(root@infonetx:/24)

Logon: root@infonetx:/24 Create Inventory Labels Wed Mar 4 22:11:24 2009

Part ID/Warehouse TWE11-23
Description CONTACT TIP 11-23

List Price (0=No Print) 0.600 EACH
Number Of Labels 3 (0=Quantity On Hand)
Extra Field (P/L/D) 0 Price, Location, Desc
Slot 0 0=List, 1..9, 96=Quan, 97=Ave, 98=Book, 99=LastCost
Customer -0
LabelStyle (L/C/3/T/B/R) 1 Label, Card, 3UP, Tinytag, BarcodeBlazer, Ring
Output Device 1

First Prev Next Last INFONETICS Clear Go View Exit

SETUP SCREEN: CREATE INVENTORY LABELS

The LABEL PRINTING PROGRAMS print stock labels for affixing to product.

- Three sizes are available;
 - Stocking Labels (1" High x 3.5" Wide).
 - Tiny Tag Labels (1/2" High x 1" Wide).
 - Barcode Labels (1" High x 2.4" Wide).
Uses optional **thermal transfer barcode** label printer.
- Labels can be **sorted by Part ID, Description, Product Type code or G/L Account.**
- Can be restricted to **specific sub-sets of the parts** by restricting the product type, G/L accounts, warehouse, or other delimiters.
- Create Inventory Labels programs permits **interactive printing of individual part labels** with option to **modify description** for single or multiple-label run.

YOUR COMPANY NAME, INC.

LINCOLN FLEETWOOD 35
ELECTRODES 1/8"
(E6011)

\$0.724

PART # LIN35-18

YOUR COMPANY NAME, INC.

LINCOLN FLEETWOOD 35
ELECTRODES 1/8"
(E6011)

\$0.724

PART # LIN35-18

YOUR COMPANY NAME, INC.

LINCOLN FLEETWOOD 35
ELECTRODES 1/8"
(E6011)

\$0.724

PART # LIN35-18

PART ID: **TWE11-23**

CONTACT TIP

\$0.510 EACH

PART ID: **TWE11-23**

CONTACT TIP

\$0.510 EACH

PART ID: **TWE11-23**

CONTACT TIP

\$0.510 EACH

TWE11-23
CONTACT TIP
\$0.510 EACH P01

TWE11-23
CONTACT TIP
\$0.510 EACH P01

TWE11-23
CONTACT TIP
\$0.510 EACH P01

TWE11-23
CONTACT TIP
\$0.510 EACH P01

TWE11-23
CONTACT TIP
\$0.510 EACH P01

TWE11-23
CONTACT TIP
\$0.510 EACH P01

TWE11-23
CONTACT TIP
\$0.510 EACH P01

TWE11-23
CONTACT TIP
\$0.510 EACH P01

SAMPLE OUTPUT: BARCODE LABELS, 1" X 3 1/2" LABELS, AND 1/2" X 1" TINY TAG LABELS



The INVENTORY STOCKING LISTS are a series of sophisticated reports based on the Warehouse Quantities and Transaction History files. They can be used to produce listings of only those parts which need reordering, or conversely only those parts which are currently “shippable” or “unshippable” to customers. Finally, variations exist to recap all history for any selected range of parts or even for only inactive parts.

- The **QUICK VIEW STOCK INQUIRY** is a specially configured version of the standard “Inventory Stocking List”. It has only a limited number of setup fields (Part#, Description, Warehouse, History Date Range, and Detail) which permits extremely quick and easy configuration of the report for a spot check on an item.
- The **INVENTORY OUT OF STOCK LIST** shows only items whose projected quantity is **negative**. These are the worst offenders and need to be ordered immediately.
- The **INVENTORY MINIMUM LIST** shows only items whose projected quantity is **below its “Minimum Stock”** quantity.
- The **INVENTORY REORDER LIST** shows only items whose projected quantity is **below its “Buy Point”**.
- The **INVENTORY OVERAGE LIST** shows only items whose projected quantity is **above its “Maximum Stock”** quantity.
- The **INVENTORY STOCKING LIST** shows all items, **regardless of reorder status**, as long as there is some kind of quantity and/or history associated with the part number. This report is the basis for all the other variations.
- The **INVENTORY SHIPPABLE LIST** shows only items that have **some “Shippable” activity**.

SETUP SCREEN: INVENTORY STOCKING LISTS

- The **INVENTORY UNSHIPABLE LIST** shows only items that have **some “UnShippable” activity** upcoming.
- The **INVENTORY HISTORY LIST** shows only items that have had **some activity** in the history file within the prescribed transaction date range.
- The **INVENTORY INACTIVITY LIST** shows only items that have had **no activity** in the history file within the prescribed transaction date range and **have a current quantity** on hand or available.
- The **INVENTORY UNUSED LIST** shows only items which have had no activity in the history file **for any warehouse** within the prescribed date range and **have no quantities**.

INVENTORY CONTROL SYSTEM

SAMPLE OUTPUT: QUICK VIEW STOCK INQUIRY

INCREASE PRICES/COST increases prices or costs for the selected parts in the parts list either by a fixed percentage or a flat rate. It can also be used to establish a list price based on the latest cost or vice-versa.

Page 21



The **RESET PHYSICAL QUANTITY** program erases any quantity that may have been left over in the physical counting bucket from some prior counting. The physical count as it is posted will be accumulated in this physical count bucket; therefore it is necessary to clear/erase this field. As the physical count is reset, a copy of an "Inventory Physical Count" sheet is produced.

The **INVENTORY PHYSICAL COUNT** program is used to produce additional copies of counting sheets for a batch of selected parts if more than one person is to be doing the counting. Note: since a given part could be located in multiple places throughout a warehouse, it can be noted on multiple count sheets. The count sheet itself is a double spaced document showing the part number, description, units and a large underlined space for writing in the physical count. It specifically does not show the current "On-Hand" count as that would allow warehouse personnel to simply confirm the number rather than actually counting the items. This program also establishes the physical selection file.

The **INVENTORY RECON REPORT** is used to reconcile the computers "On Hand" or "Book" count to the physical count posted by the "Post Physical Inventory" program, or uploaded from the handhelds. Only those items that differ are printed on the reconciliation, and need recounting/reverifying. The reconciliation report

SETUP SCREEN: INVENTORY PHYSICAL REPORTS

format is similar to the physical count sheets, but also includes variance/cost columns so that one knows the relative worth of the items being recounted.

The **COMMIT PHYSICAL TO ON-HAND** program is used (after having satisfactorily reconciled the physical count) to copy the quantity from the Physical Count field to the On-Hand field as of the ending history cutoff date.

Physical Count can be reconcile and committed to on-hand

POST PHYSICAL INVENTORY

POST PHYSICAL INVENTORY is used to post physical counts into a temporary off line physical counting field. Later, this off line physical count bucket is reconciled to, and then committed to the On-Hand or "Book" count.

PHYSICAL SELECTION FILE automates the count process by presenting part id's in the order listed on the the physical count sheets.

EDIT SCREEN: POST PHYSICAL INVENTORY

RECOMPUTE STOCK CONTROLS



INVENTORY
CONTROL
SYSTEM

Re-Compute Stock Controls(root@infonetx/2)

Logon: root@infonetx:/2 Re-Compute Stock Controls Tue Feb 10 21:10:46 2009

SMARTVIEW AND EXCLUSIVE RANGES IN EFFECT!

Part	ID	Desc											
Part Codes	Type	Manf	Vendor	VendPart									
Master Dates	Open	0	Close	0	Last	0							
G/L Accounts	Asset	999999	Sales	999999	Updt	999999							
Inventory Flags	Edit	Edit	Edit	Edit	Tax	Adj	Quan	Comb	Pric				
Warehouse Codes	Desc	Mult	Pric	Cost	Over	Quan	Dec	Dec					
	Whs	Loc	Hist	10109	Formula								
Update Database (Y/N)	Y												
Detail (All/Stock/None)	A												
Page Break (Y/N)	N												
Output Device	1												

INPNETICS Go View Exit

The **RECOMPUTE STOCK CONTROLS** program is used to recalculate the Inventory Daily/Monthly Averages, Minimum, Buy Point, and Maximum Stock points based on established stocking formulas and recent usage history. It is equivalent to the computation performed by the <COMPUTE> softkey on the second editing page of the "Edit Inventory Part File" program; however, it can be run for an entire batch of parts at one time.

SETUP SCREEN: RECOMPUTE STOCK CONTROLS

Logon: root@infonetx:/3

INFONETICS, Inc.
Re-Compute Stock Controls
For The Period Ended 03/07/09

Sat Mar 7 14:06:10 2009
Page: 1

Part I.D.	Description	Unit	Standard	Average Usage	Minimum	Buy Point	Maximum	Extended Suggested
Whs Location	Formula	Mths/Off	From - Thru	--Package	--Daily	--Monthly	Days Quantity	Days Quantity
LIN35-18	1/8 LINCOLN 6011	LBS						
1	.B34	9/ 8 10/ 8	11/ 8 12/ 8	1/ 9	2/ 9	Total		
Usage-->	0	0	0	0	0	0	0	0
Compute-->	STANDARD FORMULA	6 0 9/ 8 -	2/ 9	0	0.0000	0.00	15	0 30 0 90 0 450 -450 Ovr
LIN35-316	3/16 LINCOLN 6011	LBS						
1	9/ 8 10/ 8	11/ 8 12/ 8	1/ 9	2/ 9	Total			
Usage-->	0	0	0	0	176	176 Usage Spike		
Compute-->	STANDARD FORMULA	6 0 9/ 8 -	2/ 9	0	0.9778	29.33	15	14 30 29 90 88 -306 394 OUT
LIN35-316-P	3/16 LINCOLN 6011 PALLET	/PAL						
1	9/ 8 10/ 8	11/ 8 12/ 8	1/ 9	2/ 9	Total			
Usage-->	10	7	12	10	8	7	54	
Compute-->	STANDARD FORMULA	6 0 9/ 8 -	2/ 9	0	0.3000	9.00	15	4 30 9 90 27 7 20 Buy
LIN35-332	3/32 LINCOLN 6011	LBS						
1	9/ 8 10/ 8	11/ 8 12/ 8	1/ 9	2/ 9	Total			
Usage-->	0	0	0	100	0	100 Usage Spike		
Compute-->	STANDARD FORMULA	6 0 9/ 8 -	2/ 9	0	0.5556	16.67	15	8 30 16 90 50 60 -10 Ovr

SAMPLE OUTPUT: RECOMPUTE STOCK CONTROLS



Several utility programs are available to assist in the maintenance of the volumes of information in your Inventory Management System.

The **ESTABLISH PROD TYPE CODES** program is used to assign a new Product Type code to selected part records and to assign G/L Accounts based on the defaults established in the icType file editor.

The **ESTABLISH MANUFACT. CODES** program is used to assign a new Manufacturer code to selected part records.

The **ESTABLISH G/L ACCT DEFLT**s program is used to assign the G/L Accounts for selected part records.

The **ESTABLISH PREFERRED VENDOR** program is used to assign a new Preferred Vendor code to selected part records.

The **ESTABLISH DISCOUNT TABLES** program is used to clone an existing Quantity Discount Pricing Table from an established Part onto other selected parts.

The **ESTABLISH STOCK FORMULAS** program is used to assign a Stock Formula to selected warehouse quantity records.

Establish Prod Type Codes(root@infonetx/2)

Logon: root@infonetx:/2 Establish Prod Type Codes Tue Feb 10 21:14:02 2009

SMARTVIEW AND EXCLUSIVE RANGES IN EFFECT!

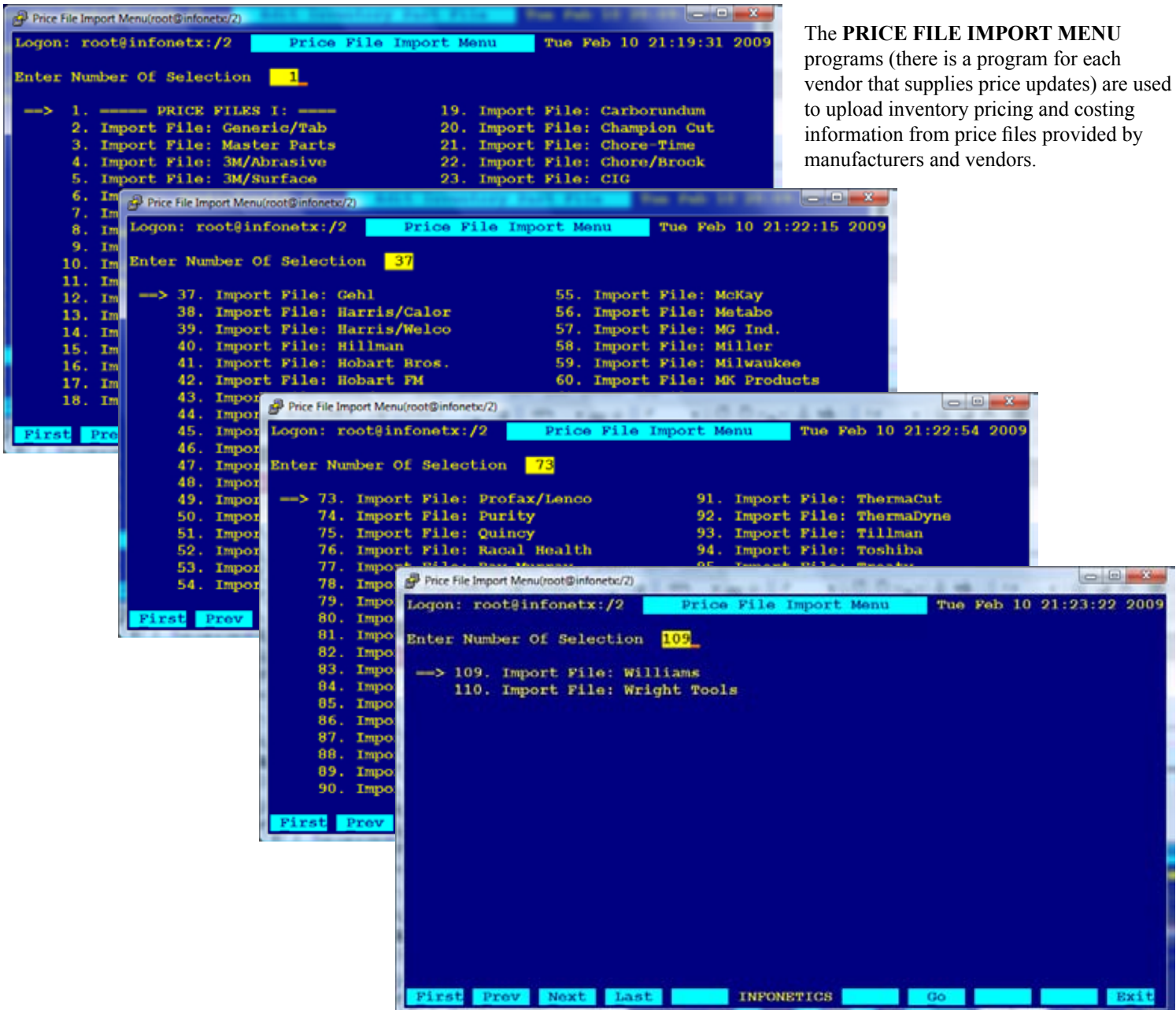
Part	ID	Desc
Part Codes	Type	Manf Vendor VendPart
Master Dates	Open	Close Last Updt Phys
G/L Accounts	Asset	Sales Cost MSDS
Inventory Flags	Edit	Edit Edit Edit Tax Adj Quan Comb Pric
Warehouse Codes	Desc	Mult Pric Cost Over Quan Dec
	Wh	Loc Hist Date Formula CC SN
Sort Sequence		Part, Desc, Type, Manf, Asset, Sales, Cost, Vend, Loc, Quan
New Type Code		
Output Device		

INPNETICS Go View Exit

SETUP SCREEN: ESTABLISH PROD TYPE CODES

The **ROLL SUBCOST INTO MASTER** program is used to recalculate the current Average, Latest, and Book Cost for a master part record, based on the costs of its Sub-Assembly Table.

The **ROLL AVE COST TO BOOKCOST** program is used on a yearly basis, after the year end Inventory Valuation has been computed and finalized, to roll the current Average Cost into the Book Cost field.



MENU SCREENS: PRICE FILE IMPORT MENU



Import File: OKI Supply(root@infonetx/2)

Logon: root@infonetx:/2 Import File: OKI Supply Tue Feb 10 21:30:10 2009

SMARTVIEW AND EXCLUSIVE RANGES IN EFFECT!

Part	ID	Desc
Part Codes	Type	Manf Vendor VendPart
Master Dates	Open 0 Close 0 Last 0	
G/L Accounts	Asset 999999 Sales 999999 Updt 999999	
Add New Part	Y	New Part Template TEMP-OKI
Update Description	Y	
Update List Price	Y	
Update Quan Discounts	Y	
Update Average Cost	Y	
Update Latest Cost	Y	
Update Book Cost	Y	
Update Vendor Info	Y	Vendor ID OKIBE
New Update Date	21009	
Script	/src/ics/icup.oki	I: OKIMST.TXT
Output Device	S	

INPNETICS Go View Exit

SETUP SCREEN: UPLOAD DISK: VENDOR

Logon: root@infonetx:/3

INFONETICS, Inc.
Import File: Lincoln

Sat Mar 7 14:37:14 2009
Page: 30

Part-----	Description-----	Typ Mfg	-----Old	-----New	-----Old Cost-----	-----New
			---Price---	---Price---	---Average---	---Last---
					---Book---	---Cost Status-----
LINKP655-3/32	DRIVE ROLL KIT - 068-3/32" CORED/SOLID 4 A01 LIN		103.0000		72.3800	Part Not Found
Vendor:	Part ID: 015082049281				72.3800	Not Updated
LINKP656-035A	DRIVE ROLL KIT - 035 ALUMINUM WIRE 4 ROL A01 LIN		273.0000		192.7000	Part Not Found
Vendor:	Part ID: 015082049298				192.7000	Not Updated
LINKP656-1/16A	DRIVE ROLL KIT - 1/16 ALUMINUM WIRE 4 RO A01 LIN		273.0000		192.7000	Part Not Found
Vendor:	Part ID: 015082049304				192.7000	Not Updated
LINKP656-3/64A	DRIVE ROLL KIT - 3/64 ALUMINUM WIRE 4 RO A01 LIN		273.0000		192.7000	Part Not Found
Vendor:	Part ID: 015082049311				192.7000	Not Updated
LINKP665-035	DRIVE ROLL KIT - .023-.025" AND .035" SO A01 LIN		21.9899		15.5000	Part Not Found
Vendor:	Part ID: 015082049328				15.5000	Not Updated
LINKP665-045C	DRIVE ROLL KIT - .035/.045" CORED WIRE A01 LIN		21.9899		15.5000	Part Not Found
Vendor:	Part ID: 015082049335				15.5000	Not Updated
LINKP666-035C	DRIVE ROLL KIT - .035" CORED WIRE A01 LIN		21.7600		15.3400	Part Not Found
Vendor:	Part ID: 015082049342				15.3400	Not Updated
LINKP666-045C	DRIVE ROLL KIT - .035/.045" CORED WIRE A01 LIN		20.3500		14.3400	Part Not Found
Vendor:	Part ID: 015082465449				14.3400	Not Updated
LINKP674-035C	DRIVE ROLL KIT - 035-045 CORED SP-255 W A01 LIN		30.0600		19.7800	Part Not Found
Vendor:	Part ID: 015082383323				19.7800	Not Updated
LINKP674-035S	DRIVE ROLL KIT - 025-035 SOLID SP-255 W A01 LIN		30.0600		19.7800	Part Not Found
Vendor:	Part ID: 015082000268				19.7800	Not Updated
LINKP674-045C	DRIVE ROLL KIT - 045 CORED SP-255 WM-25 A01 LIN		30.0600		19.7800	Part Not Found
Vendor:	Part ID: 015082000282				19.7800	Not Updated
LINKP674-045S	DRIVE ROLL KIT - 035-045 SOLID SP-255 W A01 LIN		30.0600		19.7800	Part Not Found
Vendor:	Part ID: 015082000275				19.7800	Not Updated
LINKP674-3/64A	DRIVE ROLL KIT - 3/64 ALUMINUM SP-255 W A01 LIN		35.0300		23.0500	Part Not Found
Vendor:	Part ID: 015082000299				23.0500	Not Updated

738 Parts Processed, 738 New, 0 Existing

SAMPLE OUTPUT: UPLOAD DISK: VENDOR