

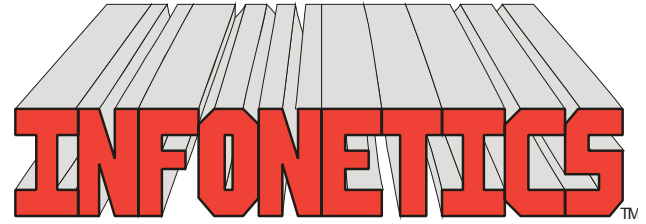
# SERIAL NUMBER SYSTEM

SERIAL  
NUMBER  
SYSTEM



The serial number tracking programs provide an on-line method of tracking individual items (cylinders or machines/hardgoods) as they move from your stock to the customer and back. Current status of each serial number, such as last Ship-To Name and Address, Invoice number and Date, are available instantly. Select groups of items can be tracked by serial number if you don't want to do all cylinders.

Barcoding of the item's serial number is available with a Barcode Printer. Portable hand-held scanners can be taken on the delivery trucks for automated collection of the serial number transactions.



1729 Gateway Circle, OH 43123 • Grove City, OH 43123 • Phone 614-875-2006  
www.infonetx.com • e-mail: info@infonetx.com • Fax 614-875-7761

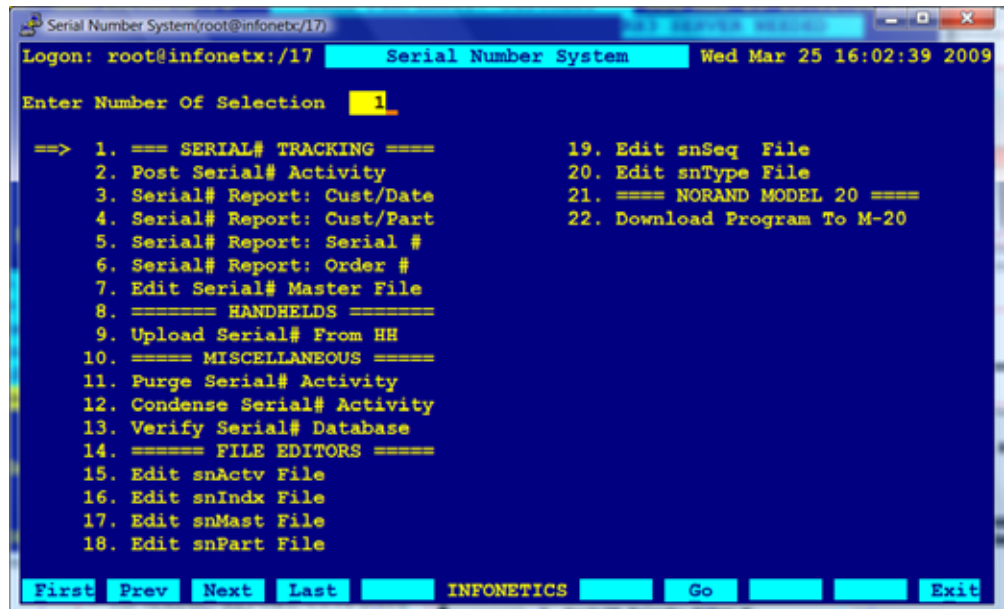
## SERIAL NUMBER MENU

### SERIAL# TRACKING

- The **POST SERIAL# ACTIVITY** program allows the operator to add, change, view or delete serial number transaction records.

It is also a convenient way to run a quick serial number check. Most activity though is posted automatically by the Order/Invoicing System.

- The **SERIAL# REPORT: CUST/DATE** and **SERIAL# REPORT: CUST/PART** programs produce a report of serial number activity sorted by customer and/or activity date.
- The **SERIAL# REPORT: SERIAL#** program produces a report of serial number activity sorted by cylinder serial number.
- The **SERIAL# REPORT: ORDER#** program produces a report of serial number activity sorted by order number.
- The **EDIT SERIAL # MASTER FILE** program provides a means to record ancillary information associated with each serial number, such as type codes, vendor, purchase date & price as well as last test, re-test and paint dates.



SERIAL NUMBER MENU SCREEN

### MISCELLANEOUS

- The **PURGE SERIAL# ACTIVITY** program is a maintenance program used to remove old serial numbers from the Serial Number database.
- The **VERIFY SERIAL# DATABASE** program is a maintenance program to ensure the internal integrity of the Serial Number database.

### FILE EDITORS

- FILE EDITORS** provide low level access to the database for programmer/system administrator use only.



## POST SERIAL# ACTIVITY

While full posting capabilities are available in Order Invoicing, the POST SERIAL# ACTIVITY program also allows the operator to add, change, view or delete serial number transaction records. It is also a convenient way to run a serial number check.

- Used **interactively** to check customer's possession of items by serial numbers (**dock check**), post ship/returned and **create receipt**. Last customer shipped to/returned from with invoice number and date are displayed for verification.
- System warnings to operator (terminal beeps):
  - New/unknown** serial numbers.
  - Attempts to **return item from different customer/ship-to** location.
  - Attempts to **ship item which is already shipped**, or **return one already received**.
  - Item status** such as **Stolen**, **Lost**, etc.
  - Part number changes** for serial numbered item.
- Receipt can be generated** for customer by the driver or dock worker.

EDIT SCREEN: POST SERIAL# ACTIVITY

## SERIAL NUMBER TRACKING

The SERIAL# REPORT: CUST/DATE and SERIAL# REPORT: CUST/PART programs produce a report of serial number activity sorted by customer/activity date.

- Recaps** entire ship/return activity for selected customer(s).
- Can be restricted to show only serial numbers **still at customer's site**. (Last Shipped often used as **serial number audit report**).
- Flags all common error conditions.

The SERIAL# REPORT: SERIAL# program produces a report of serial number activity sorted by serial number.

- Recaps** entire ship/return activity for selected serial numbers.
- Can be restricted to show only serial numbers **currently on our dock**. (Last Returned) often used as a **dock audit report**.
- Flags all common error conditions.
- Output can be directed to the screen, .PDF preview, any printer, fax, email or a networked harddrive on the server.

SETUP SCREEN: SERIAL# REPORT BY CUSTOMER/DATE

# SERIAL NUMBER TRACKING

SERIAL  
NUMBER  
SYSTEM



Logon: root@infonetx:/17

INFONETICS, Inc.  
Serial# Report: Cust/Date  
For The Period 01/01/08 Thru 03/25/09

Wed Mar 25 16:44:04 2009  
Page: 1

Master Description-- Type-----		Vendor	---Amount	Purchase	LastTest	--Paint-	-ReTest-
Cust/Vend Name-----	--Date--	-Time -Order#	Serial Number-----	ShpRcv	Part I.D.-----	Wh Description-----	Lot/Batch---
JOE'S 0 JOE'S BODY SHOP	02/02/09		198092 BNL6543	Recv	ACE4	1 #4	ACETYLENE
	OXY337		S **REPORTED STOLEN*** ACME0	127.00	02/22/93		
SN ACTIVITY-->			JJC1234	Ship	ACE4	1 #4	ACETYLENE
	02/02/09		198092 2 1 <-->	1 1	ACE4	#4	ACETYLENE
			CUSTOMER TOTAL **	1 1	ACE4	#4	ACETYLENE
LITTL 0 LITTLE AUTO WRECKING CO	03/03/08		19588 YTETY896	Recv	ARG/OXY/982T	1 375	ARG-OXY MIX
			ABC123	Ship	ARG/OXY/982T	1 375	ARG-OXY MIX
			ABC952	Ship	ARG/OXY/982T	1 375	ARG-OXY MIX
	03/03/08		19588 3 3 <-->	2 1	ARG/OXY/982T	375	ARG-OXY MIX
	01/20/09		198074 450944	Ship	ACEB	1 B	ACETYLENE
			590078	Ship	ACEB	1 B	ACETYLENE
	01/20/09		198074 5 4 <-->	2	ACEB	B	ACETYLENE
			CUSTOMER TOTAL **	2	ACEB	B	ACETYLENE
				2 1	ARG/OXY/982T	375	ARG-OXY MIX
LITTL 2 LITTLE AUTO WRECKING CO	06/04/08		198047 ABC123	Ship	ARG/CO2/955T	1 375	ARG-CO2 MIX 456096
	06/04/08		198047 5 6 <-->	1	ARG/CO2/955T	375	ARG-CO2 MIX
	10/22/08		198065 ABC123	Ship	ARG/CO2/7525T	1 375	ARG-CO2 MIX 456096
			CX098347	Ship	ARG/CO2/7525T	1 375	ARG-CO2 MIX 0-060219-04
			ABC123	Ship	ARG/CO2/7525T	1 375	ARG-CO2 MIX 456096
	10/22/08		198065 5 5 <-->	3	ARG/CO2/7525T	375	ARG-CO2 MIX
			CUSTOMER TOTAL **	3	ARG/CO2/7525T	375	ARG-CO2 MIX
				1	ARG/CO2/955T	375	ARG-CO2 MIX
			GRAND TOTAL **	1 1	ACE4	#4	ACETYLENE
				2	ACEB	B	ACETYLENE
				3	ARG/CO2/7525T	375	ARG-CO2 MIX
				1	ARG/CO2/955T	375	ARG-CO2 MIX
				2 1	ARG/OXY/982T	375	ARG-OXY MIX

SAMPLE OUTPUT: SERIAL# REPORT: CUSTOMER/DATE

Logon: root@infonetx:/17

INFONETICS, Inc.  
Serial# Report: Serial #  
For The Period 01/01/09 Thru 03/25/09

Wed Mar 25 16:46:17 2009  
Page: 1

Master Description-- Type-----		Vendor	---Amount	Purchase	LastTest	--Paint-	-ReTest-
Serial Number-----	Cust/Vend Name-----	--Date--	-Time -Order#	ShpRcv	Part I.D.-----	Wh Description-----	Lot/Batch---
450944	LITTL 0 LITTLE AUTO WRECKING CO	01/20/09	198074	Ship	ACEB	1 B	ACETYLENE
590078	LITTL 0 LITTLE AUTO WRECKING CO	01/20/09	198074	Ship	ACEB	1 B	ACETYLENE
BNL1234	JCRAC 0 RACING\JC	01/08/09	198067	Recv	ARG336	1 336	ARGON
BNL2345	JCRAC 0 RACING\JC	01/08/09	198067	Recv	ARG336	1 336	ARGON
BNL6543	JOE'S 0 JOE'S BODY SHOP	02/02/09	198092	Recv	ACE4	1 #4	ACETYLENE
JJC1234	OXY337 S **REPORTED STOLEN*** ACME0	127.00	02/22/93				
SN ACTIVITY-->	JOE'S 0 JOE'S BODY SHOP	02/02/09	198092	Ship	ACE4	1 #4	ACETYLENE
			GRAND TOTAL **	1 1	ACE4	#4	ACETYLENE
				2	ACEB	B	ACETYLENE
				2	ARG336	336	ARGON

SAMPLE OUTPUT: SERIAL# REPORT: SERIAL#



Logon: root@infonetx:/17

INFONETICS, Inc.  
Serial# Report: Cust/Part  
For The Period 01/01/09 Thru 03/25/09

Wed Mar 25 16:57:29 2009

Page: 1

Cust/Vend Name-----		Master Description--	Type-----	Vendor	---Amount	Purchase	LastTest	--Paint-	-ReTest-	
Part I.D.-----		Wh Description-----	Lot/Batch---	-Date--	-Time	-Order#	Serial	Number-----	ShpRcv	
JCRAC	0 RACING\JC	ARG336	1	336 ARGON		01/08/09	198067	BNL1234		Recv
			1					BNL2345		Recv
		ARG336		336 ARGON				CUSTOMER TOTAL *		2
JOE'S	0 JOE'S BODY SHOP	ACE4	1	#4 ACETYLENE		02/02/09	198092	BNL6543		Recv
		OKY337		S **REPORTED STOLEN*** ACME0	127.00	02/22/93				
	SN ACTIVITY-->		1					JJC1234		Ship
		ACE4		#4 ACETYLENE				CUSTOMER TOTAL *	1	1
LITTL	0 LITTLE AUTO WRECKING CO	ACEB	1	B ACETYLENE		01/20/09	198074	450944		Ship
			1					590078		Ship
		ACEB		B ACETYLENE				CUSTOMER TOTAL *		2
GRAND TOTAL **				1	1 ACE4		#4	ACETYLENE		
				2	ACEB		B	ACETYLENE		
					2 ARG336			336 ARGON		

SAMPLE OUTPUT: SERIAL# REPORT: CUST/PART

Logon: root@infonetx:/17

INFONETICS, Inc.  
Serial# Report: Order #  
For The Period 01/01/09 Thru 03/25/09

Wed Mar 25 17:03:47 2009

Page: 1

Cust/Vend Name-----		Master Description--	Type-----	Vendor	---Amount	Purchase	LastTest	--Paint-	-ReTest-	
--Date--		-Time	-Order#	Serial	Number-----	ShpRcv	Part I.D.-----	Wh Description-----	Lot/Batch---	
JCRAC	0 RACING\JC	01/08/09		198067	BNL1234		Recv	ARG336	1	336 ARGON
					BNL2345		Recv	ARG336	1	336 ARGON
		01/08/09		198067		1	2	ARG336		336 ARGON
LITTL	0 LITTLE AUTO WRECKING CO	01/20/09		198074	450944		Ship	ACEB	1	B ACETYLENE
					590078		Ship	ACEB	1	B ACETYLENE
		01/20/09		198074		5	4	ACEB		B ACETYLENE
JOE'S	0 JOE'S BODY SHOP	02/02/09		198092	BNL6543		Recv	ACE4	1	#4 ACETYLENE
					S **REPORTED STOLEN*** ACME0	127.00	02/22/93			
	SN ACTIVITY-->				JJC1234		Ship	ACE4	1	#4 ACETYLENE
		02/02/09		198092		2	1	ACE4		#4 ACETYLENE
GRAND TOTAL **				1	1 ACE4		#4	ACETYLENE		
				2	ACEB		B	ACETYLENE		
					2 ARG336			336 ARGON		

SAMPLE OUTPUT: SERIAL# REPORT: ORDER #





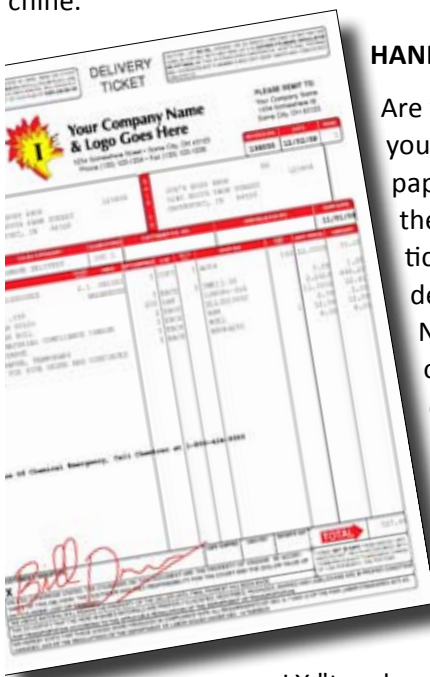
*Mobile solutions and the welding supply industry, a difficult challenge indeed. Some devices have been too delicate for the rugged environment of the welding distributor, while others have been durable but not functional past simple data capture. INFONETICS is proud to introduce the second generation of our all-in-one mobile solution, INFOPad.*

## USE WITH SALES FORCE

With INFOPad the sales force now has access to their INFONETICS system at a customer location, at a trade show, in their car (while in park, of course), or back at the office. No more calling back to the office to check stock, customer special pricing, or whether an order has shipped or not. All the information is now at the fingertips of the sales force with INFOPad.

## USE IN THE OFFICE

Not only is INFOPad a great mobile device, it is an extremely versatile machine that can be used for everyday life in the office. INFOPad can seamlessly be added to your wired or wireless network in the office and serve many purposes. At the sales counter it can be your point-of-sale device and capture handwriting/signatures. In the showroom you can use INFOPad and the wireless scanner to take inventory or scan and add those hard to move items like welding machines to a customer order. In the warehouse or on the dock INFOPad can be used for receiving, inventory, or any number of solutions where a temporary/mobile computer might be better than a permanently affixed machine.



## HANDWRITING/SIGNATURE CAPTURE

Are you ready for a paperless system finally? Can you imagine your driver heading out without paperwork, pulling up their delivery tickets on the INFOPad, making the changes necessary to ticket at the point of delivery, having the customer sign the INFOPad tablet PC, and then delivering a copy of that invoice via fax or e-mail to that customer's purchasing agent? No more deciphering handwritten changes made by drivers in a hurry, no more stacks of data entry at the end of the day or end of the month, and no more filling up filing cabinets with thousands of signed shippers. Now your customer's signature is stored on your system specifically along with the ticket they signed for and can be faxed or e-mailed to the customer if and when they need a copy. It could not be easier!



When paired with INFONETICS' INFONET-LX "touch-enhanced" terminal emulator, the INFOPad quickly becomes the easiest "windows-like" user interface available in the mobile computing arena.



SERIAL  
NUMBER  
SYSTEM

## INFOPAD MOBILE TABLET PC



### MOBILITY VIA EvDO

With the introduction of EvDO (Evolution Data Only), the ability to take INFONETICS with you anywhere you go is now a possibility. EvDO is a wireless data connection provided by phone companies that is 10 times as fast as a regular modem and provides the user with a live connection to their system with INFONETICS' remote internet telnet access (RITA).

### SMALLER IS BETTER

The 9" screen featuring 800x400 (HQVGA) resolution is just big enough to do the job, but small enough to be truly portable. The integrated light sensor automatically adjusts

the brightness of the LCD backlight to improve outdoor visibility.

The INFOPad sports a traditional micro-sized built-in laptop keyboard, and also can be converted to a tablet PC by rotating the screen 180 degrees and laying back down over the keyboard. This allows both keyboarding and virtual keyboarding on-screen.



### WIRELESS BARCODE SCANNER



Using "Bluetooth" wireless connectivity, the high-resolution barcode scanner can be used to scan UPC barcode labels of products, or serial number labels of industrial gas cylinders reducing typing and increasing accuracy of all data entry.

### LONG BATTERY LIFE

The smart 7200mAH (53.2W) Lithium-Ion main battery pack is capable of many hours of uninterrupted operation. The battery is quickly recharged whenever the INFOPad is attached to the truck DC adapter. And of course, an AC adapter is standard for recharging wherever needed.

Weighing in at less than 3lbs, the INFOPad is lightweight, easy to handle and comes with a durable handle for easy carrying.

### GLOBAL POSITIONING SYSTEM (GPS) RECEIVER

An add-on GPS receiver pinpoints the INFOPad's location whenever it is in range of the open sky. INFONETICS unique integration between its Customer Management System and Microsoft Outlook & Microsoft Streets & Trips means the INFOPad is able to quickly map and locate all customers within the main INFONETICS server's database. Knowing where you are and where you're going couldn't be easier for your delivery drivers and salesmen. Integration to your centralized server based GPS tracking software allows you to know where every INFOPad is instantly.



### INFOPad SPECS

Windows 7/ULPC Edition  
Featuring Intel 1.6GHz ATOM processor  
Preloaded with INFONET/LX networking suite  
Preloaded with INFONETICS iWrite Handwriting/Signature Capture module  
1 GB DDR SDRAM  
60GB hard drive  
8.9" 1024 x 600 Color Touch Screen LCD (WSVGA)  
17" Flat Panel, Full-Size Keyboard & Mouse for Point-Of-Sale use (optional)

10 / 100M Ethernet (built-in)  
802.11 b/g/n WLAN (WIFI built-in)  
Wireless connectivity (CellModem & Bluetooth) options  
Wireless Bluetooth Barcode Scanner (optional)  
Compact dual-use design, traditional laptop convertible to tablet mode  
Semi-ruggedized design, Water Resistant Keyboard  
1.3 Megapixel Webcam  
Weighs less than 3 lbs